

**BALDOR • RELIANCE**

---

# Customer information packet

## XM28322T

30//25HP, 3525//2920RPM, 3PH, 60//50HZ, 286T

Class - CLI GP D; CLII GP F,G

Division - Division I

## Specifications

Enclosure	XPFC
Frame	286TS
Frame Material	Iron
Frequency	50.00 Hz 60.00 Hz
Motor Letter Type	Three Phase
Output @ Frequency	30.000 HP @ 60 HZ 25.000 HP @ 50 HZ
Phase	3
Synchronous Speed @ Frequency	3600 RPM @ 60 HZ
Voltage @ Frequency	460.0 V @ 60 HZ 190.0 V @ 50 HZ 230.0 V @ 60 HZ 380.0 V @ 50 HZ
XP Class and Group	CLI GP D; CLII GP F,G
XP Division	Division I
Agency Approvals	UL CSA EEV
Ambient Temperature	40 °C
Auxillary Box	No Auxillary Box
Auxillary Box Lead Termination	None
Base Indicator	Rigid
Bearing Grease Type	Polyrex EM (-20F +300F)
Blower	None
Constant Torque Speed Range	6
Current @ Voltage	34.000 A @ 460.0 V 35.000 A @ 380.0 V 68.000 A @ 230.0 V 70.000 A @ 190.0 V
Design Code	B
Drip Cover	No Drip Cover
Duty Rating	CONT

## Part detail

Revision	B
Type	AC
Mech. spec.	
Base	
Status	PRD/A
Elec. spec.	10WGZ501
Layout	10LYE900
Eff. date	07-17-2023
CD Diagram	CD0180
Poles	02
Leads	9#10
Proprietary	False
Created date	04-21-2021

Efficiency @ 100% Load	91.7 %
Electrically Isolated Bearing	Not Electrically Isolated
Feedback Device	NO FEEDBACK
Heater Indicator	No Heater
High Voltage Full Load Amps	34.0 a
Insulation Class	F
Inverter Code	Not Inverter
IP Rating	NONE
KVA Code	G
Lifting Lugs	Standard Lifting Lugs
Locked Bearing Indicator	Locked Bearing
Max Speed	5400 rpm
Motor Lead Termination	Flying Leads
Motor Standards	NEMA
Motor Type	1048M
Mounting Arrangement	F1
Number of Poles	2
Overall Length	27.24 IN
Power Factor	90
Product Family	Hazardous Location Motor
Pulley Face Code	Standard
Rodent Screen	None
Service Factor	1.00
Shaft Diameter	1.625 IN
Shaft Ground Indicator	No Shaft Grounding
Shaft Rotation	Reversible
Speed	3525 rpm
Speed Code	Single Speed
Starting Method	Direct on line
Thermal Device - Bearing	None
Thermal Device - Winding	Normally Closed Thermostat
Vibration Sensor Indicator	No Vibration Sensor
Winding Thermal 1	None
Winding Thermal 2	None

**XP Temp Code**

**T3C**

---

**Nameplate**

**NP0887XPSLEV**

<b>NO.</b>		<b>CC</b>	010A		
<b>S/N</b>		<b>TEMP CODE</b>	T3C		
<b>SPEC.</b>	10-0000-2077	<b>INV.TYPE</b>	PWM		
<b>CAT.NO.</b>	XM28322T	<b>C HP FR</b>	60	<b>C HP TO</b>	90
<b>HP</b>	30//25	<b>CT HZ FROM</b>	6	<b>CT HZ TO</b>	60
<b>VOLTS</b>	230/460//190/380	<b>VT HZ FROM</b>	6	<b>VT HZ TO</b>	60
<b>AMPS</b>	68/34//70/35	<b>MAG CUR</b>	8.7		
<b>RPM</b>	3525//2920	<b>MX RPM</b>	5400		
<b>HZ</b>	60//50	<b>PH</b>	3	<b>CL</b>	F
		<b>NOM.EFF.</b>	91.7		
<b>SER.F.</b>	1.00	<b>DES</b>	B	<b>SL HZ</b>	1.3
				<b>WK2</b>	2.07
<b>FRAME</b>	286TS	<b>RATING</b>	40C AMB-CONT		
	NEMA MG-1 PART 5, IP54				
	1.15 SF ON SINE WAVE				

## Parts list

Part number	Description	Quantity
SA393023	SA 10-0000-2077	1.000 ea
RA383638	RA 10-0000-2077	1.000 ea
LB1624	COMBINED WARNING LABEL, ISO/ANSI PICTOGR	1.000 ea
LC0181	CONNECTION LABEL	1.000 ea
NP0887XPSLEV	SS XP INV UL CSA-EEV CC CL-I GP-D	1.000 ea
85XU0407S04	4X1/4 U DRIVE PIN STAINLESS	4.000 ea
85XU0407S04	4X1/4 U DRIVE PIN STAINLESS	2.000 ea
MN416A01	TAG-INSTAL-MAINT no wire (2100bx)4/22	1.000 ea
LB1073	ALUM XP CAUTION LABEL	1.000 ea
10FH1008A01	310 FAN HOUSING X-PROOF MACH.	1.000 ea
HW1001A31	LOCKWASHER 5/16, ZINC PLT.591 OD, .319 I	3.000 ea
10XN3118K12	5/16-18 X .75 GRADE 5, ZINC PLATED	3.000 ea
37FN3002C03	EXFN, PLASTIC, 6.00 OD, 1.690 ID	1.000 ea
HW2500A25	WOODRUFF KEY USA #1008 #BLOW CARBON STEE	1.000 ea
51XB1214A20	12-14X1.25 HXWSSLD SERTYB	1.000 ea
MJ1000A02	GREASE, POLYREX EM EXXON	0.130 lb
WD4100A03	DE-750 HEYCO PLUG 62MP0750 MICRO PLASTIC	1.000 ea
10EP1701A01	FR ENDPLATE, MACH	1.000 ea
HA3050A03	3/8-16 X 2.25" GRADE 8 BOLT	4.000 ea
HW1001A38	LOCKWASHER 3/8, ZINC PLT .688 OD, .382 I	4.000 ea
HW5100A11	W3917-042 WVY WSHR (WB)	1.000 ea
HW4500A20	1/8NPT SL PIPE PLUG	1.000 ea
HW4500A20	1/8NPT SL PIPE PLUG	1.000 ea
10EP1709A08	PU ENDPLATE, X-PROOF W/LABYRINTH SHAFT G	1.000 ea
HW1001A38	LOCKWASHER 3/8, ZINC PLT .688 OD, .382 I	4.000 ea
HA3050A03	3/8-16 X 2.25" GRADE 8 BOLT	4.000 ea
10XN2520K40	1/4-20 X 2-1/2 HEX HD CAPSCREW, GRADE 5, Z	4.000 ea
HW1001A25	LOCKWASHER 1/4, ZINC PLT .493 OD, .255 I	4.000 ea
HW4500A20	1/8NPT SL PIPE PLUG	1.000 ea
HW4500A20	1/8NPT SL PIPE PLUG	1.000 ea
12CB1001A02	K.O.BOX, MACH X-PROOF, 1.25 NPT HOLE	1.000 ea

10XN3118K16	5/16-18 X 1' GRADE #5, STL, ZINC PLATE	4.000 ea
HW1001A31	LOCKWASHER 5/16, ZINC PLT.591 OD, .319 I	4.000 ea
WD1000B25	GND LUG, BURNDY L125HP OR T&B L125HP-BB	1.000 ea
19XW3118G08	.31-18X.50,HEX WSHR HD,TAPTITE 2,GREEN	1.000 ea
12CB1501A01	COND.BOX LID, MACH., X-PROOF, 310,312	1.000 ea
10XN3816K20	3/8-16 X 1.25 HEX HD CAP GRADE 5	6.000 ea
HW1001A38	LOCKWASHER 3/8, ZINC PLT .688 OD, .382 I	6.000 ea
MG1025G29	WILKOFAS, 789.229, DARK CHARCOAL GRAY	0.125 ga
12PA1000	PACKAGING GROUP PRINT PK1024A07	1.000 ea
HW2501G17	KEY, 3/8 SQ X 1.875	1.000 ea

**AC Induction Motor Performance Data**

Record # 70639

Preliminary Data Sheet

Winding: 10WGZ501-R012		Type: 1048M	Enclosure: TEFC			
<b>Nameplate Data</b>			<b>460 V, 60 Hz: High Voltage Connection</b>			
Rated Output (HP)	30//25		Full Load Torque	44.8 LB-FT		
Volts	230/460//190/380		Start Configuration	direct on line		
Full Load Amps	68/34//70/35		Breakdown Torque	135 LB-FT		
R.P.M.	3525//2920		Pull-up Torque	47 LB-FT		
Hz	60//50	Phase	3	Locked-rotor Torque	65.2 LB-FT	
NEMA Design Code	B		KVA Code	G	Starting Current	212 A
Service Factor (S.F.)	1.15		No-load Current	8.74 A		
NEMA Nom. Eff.	91.7	Power Factor	90		Line-line Res. @ 25°C	0.237 Ω
Rating - Duty	40C AMB-CONT		Temp. Rise @ Rated Load	69°C		
S.F. Amps			Temp. Rise @ S.F. Load	86°C		
			Locked-rotor Power Factor	23.2136		
			Rotor inertia	2.06 lb-ft <sup>2</sup>		

**Load Characteristics 460 V, 60 Hz, 30 HP**

% of Rated Load	25	50	75	100	125	150	S.F.
Power Factor	67	83	88	90	90	90	90
Efficiency	86.8	91.2	91.9	91.7	90.8	89.6	91.2
Speed	3583	3566	3547	3527	3504	3479	3513
Line amperes	12.4	18.7	26.1	34.1	43.1	52.5	39.5



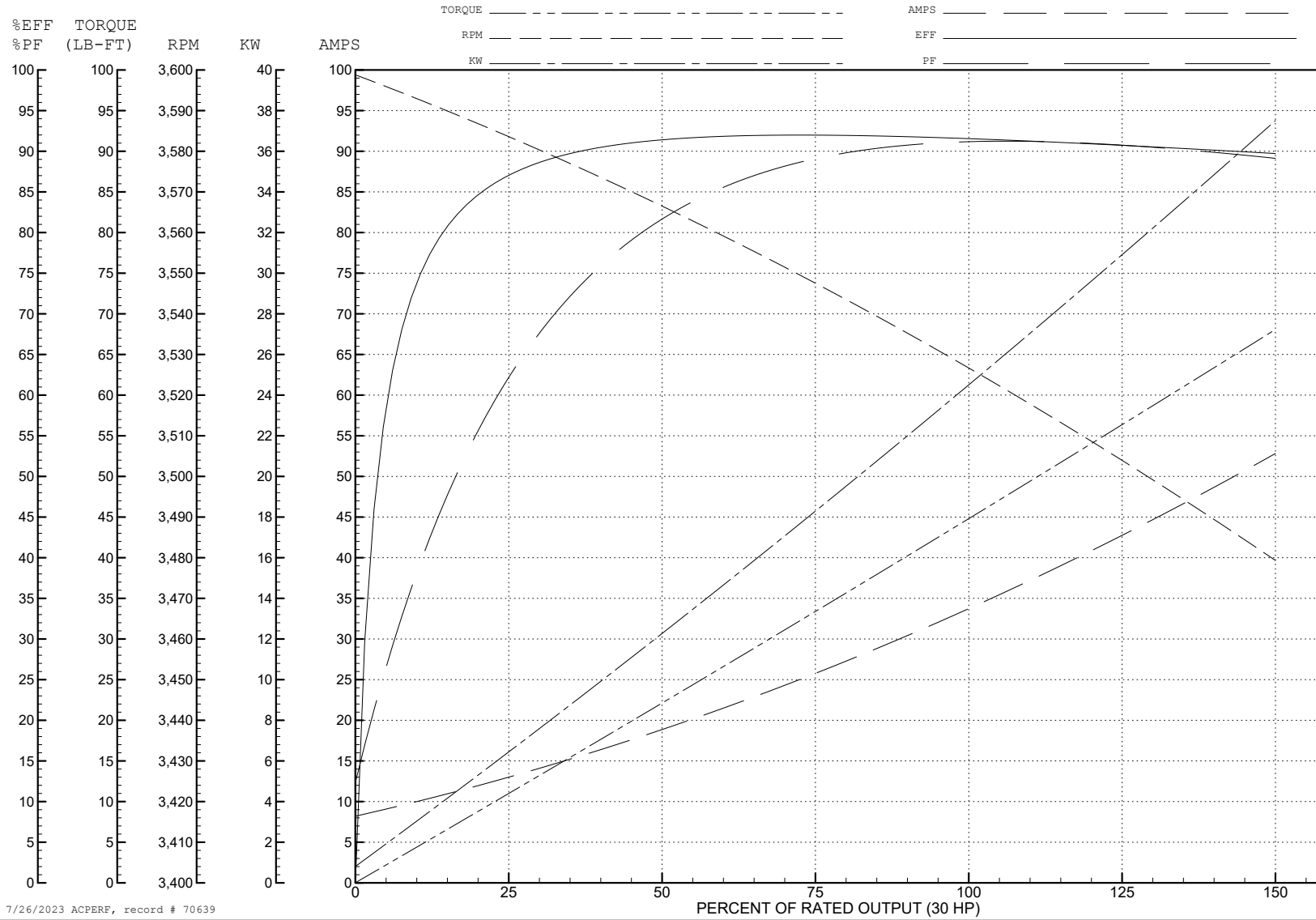
ABB Motors and Mechanical Inc.

WINDING # 10WGZ501

30 HP 3 PH 60 HZ 3527 RPM 460 V 1048M

Typical performance - not guaranteed values.

TORQUES (LB-FT): PO=135 PU=47 LR=65.2 LRA=212



7/26/2023 ACPERF, record # 70639

**AC Induction Motor Performance Data**

Record # 70640

Typical performance - not guaranteed values

<b>Winding: 10WGZ501-R012</b>		<b>Type: 1048M</b>		<b>Enclosure: XPFC</b>	
<b>Nameplate Data</b>			<b>380 V, 50 Hz: High Voltage Connection</b>		
<b>Rated Output (HP)</b>	30//25		<b>Full Load Torque</b>	45.05 LB-FT	
<b>Volts</b>	230/460//190/380		<b>Start Configuration</b>	direct on line	
<b>Full Load Amps</b>	68/34//70/35		<b>Breakdown Torque</b>	131 LB-FT	
<b>R.P.M.</b>	3525//2920		<b>Pull-up Torque</b>	49.99 LB-FT	
<b>Hz</b>	60//50	<b>Phase</b>	3	<b>Locked-rotor Torque</b>	69.35 LB-FT
<b>NEMA Design Code</b>	<b>B KVA Code</b>		G	<b>Starting Current</b>	208 A
<b>Service Factor (S.F.)</b>			1.15	<b>No-load Current</b>	8.65 A
<b>NEMA Nom. Eff.</b>	91.7	<b>Power Factor</b>	90	<b>Line-line Res. @ 25°C</b>	0.237 Ω
<b>Rating - Duty</b>			40C AMB-CONT	<b>Temp. Rise @ Rated Load</b>	71°C
<b>S.F. Amps</b>				<b>Temp. Rise @ S.F. Load</b>	90°C
				<b>Locked-rotor Power Factor</b>	26.2
				<b>Rotor inertia</b>	2.06 LB-FT <sup>2</sup>

**Load Characteristics 380 V, 50 Hz, 25 HP**

<b>% of Rated Load</b>	<b>25</b>	<b>50</b>	<b>75</b>	<b>100</b>	<b>125</b>	<b>150</b>	<b>S.F.</b>
<b>Power Factor</b>	68	84	89	90	90	90	90
<b>Efficiency</b>	85.7	90.4	91.1	90.7	89.7	88.3	90.1
<b>Speed</b>	2983	2966	2948	2928	2906	2881	2915
<b>Line amperes</b>	12.44	18.96	26.54	34.75	43.98	53.83	40.3

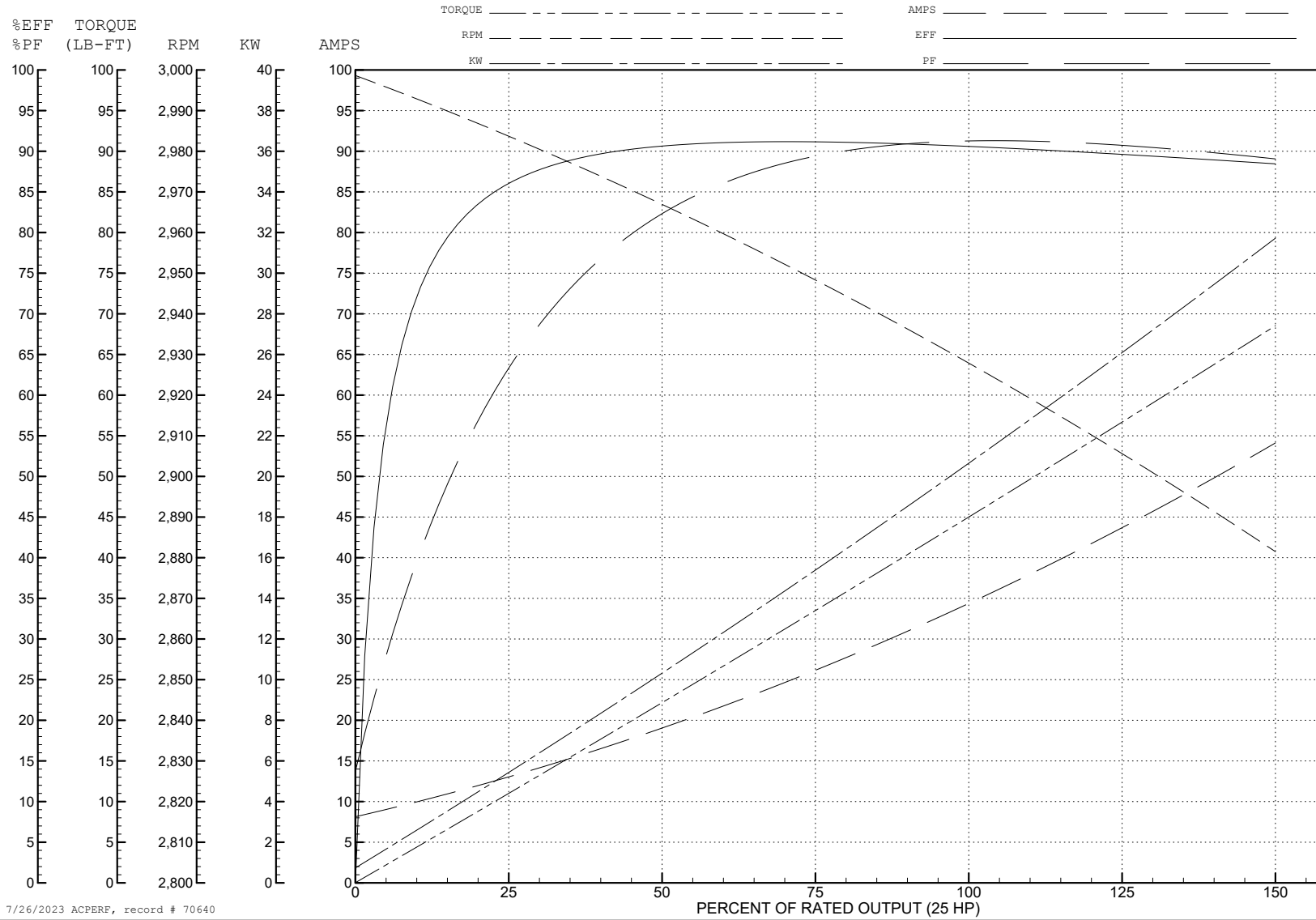
ABB Motors and Mechanical Inc.

WINDING # 10WGZ501

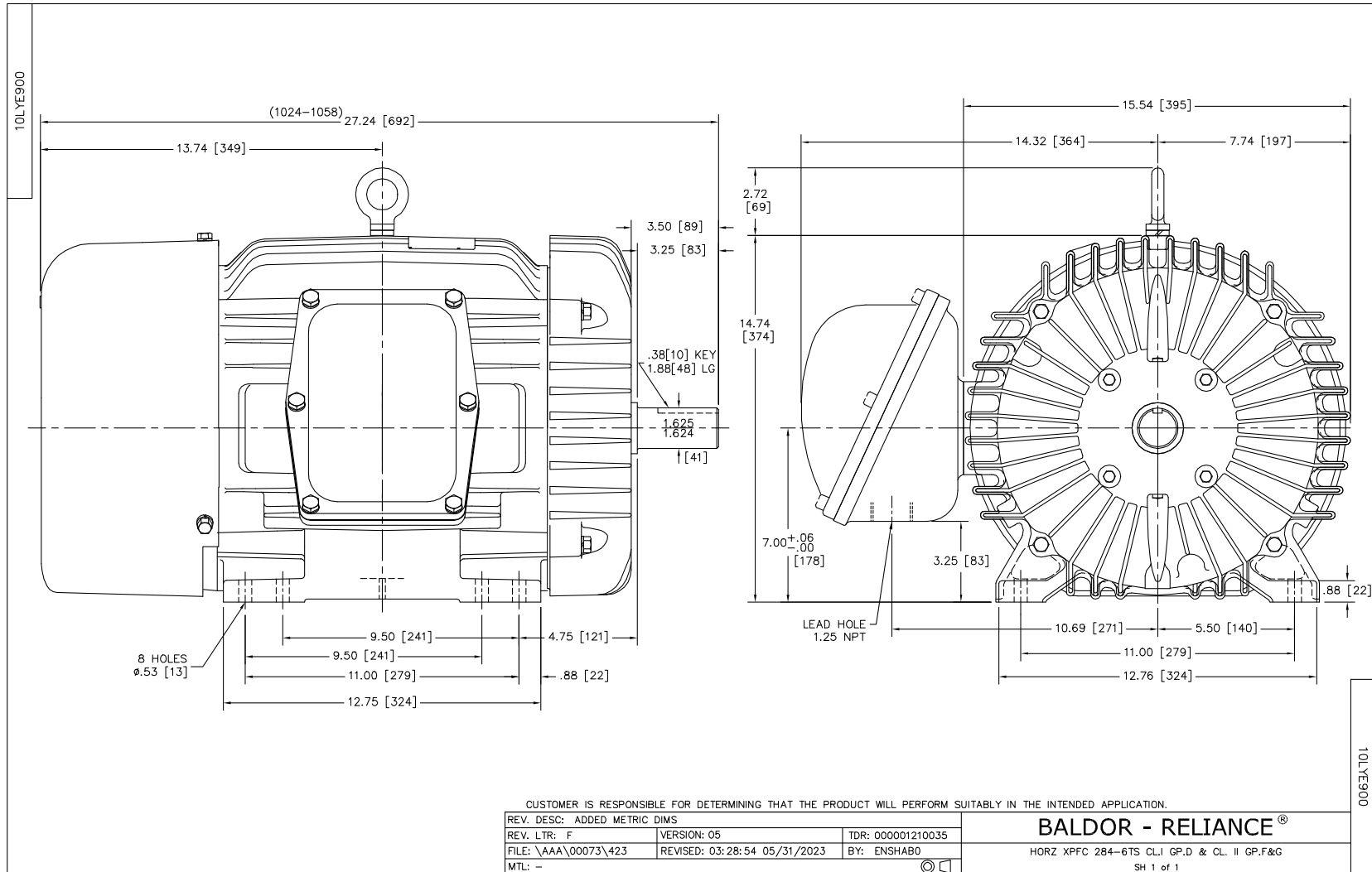
Typical performance - not guaranteed values.

25 HP 3 PH 50 HZ 2928 RPM 380 V 1048M

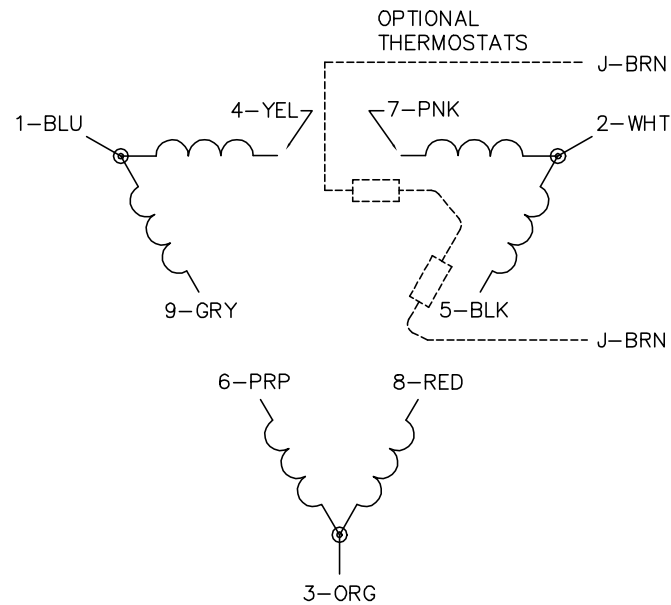
TORQUES (LB-FT): PO=131 PU=49.99 LR=69.35 LRA=208



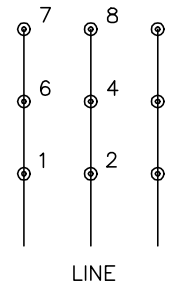
7/26/2023 ACPERF, record # 70640



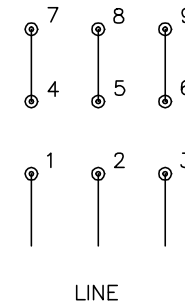
CD0180



LOW VOLTAGE  
(2D)



HIGH VOLTAGE  
(1D)



**NOTES:**

1. INTERCHANGE ANY TWO LINE LEADS TO REVERSE ROTATION.
2. OPTIONAL THERMOSTATS ARE PROVIDED WHEN SPECIFIED.
3. ACTUAL NUMBER OF INTERNAL PARALLEL CIRCUITS MAY BE A MULTIPLE OF THOSE SHOWN ABOVE.
4. LEAD COLORS ARE OPTIONAL. LEADS MUST ALWAYS BE NUMBERED AS SHOWN.

CD0180

REV. DESC: ADD CLASS CONN00000007		
REV. LTR: D	VERSION: 01	TDR: 000001099922
FILE: \AAA\00005\148	REVISED: 10: 25: 29 02/19/2019	BY: ENBRIRO
MTL: -	© □	

**BALDOR - RELIANCE®**

3PH, DV, 9 LEADS, DELTA CONNECTION

SH 1 of 1